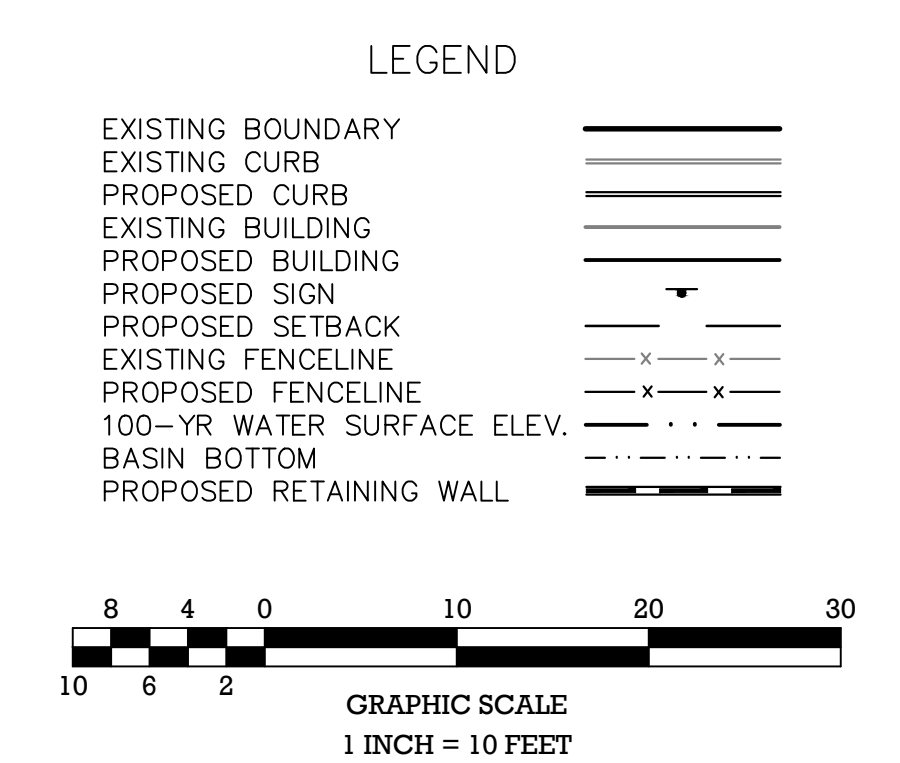
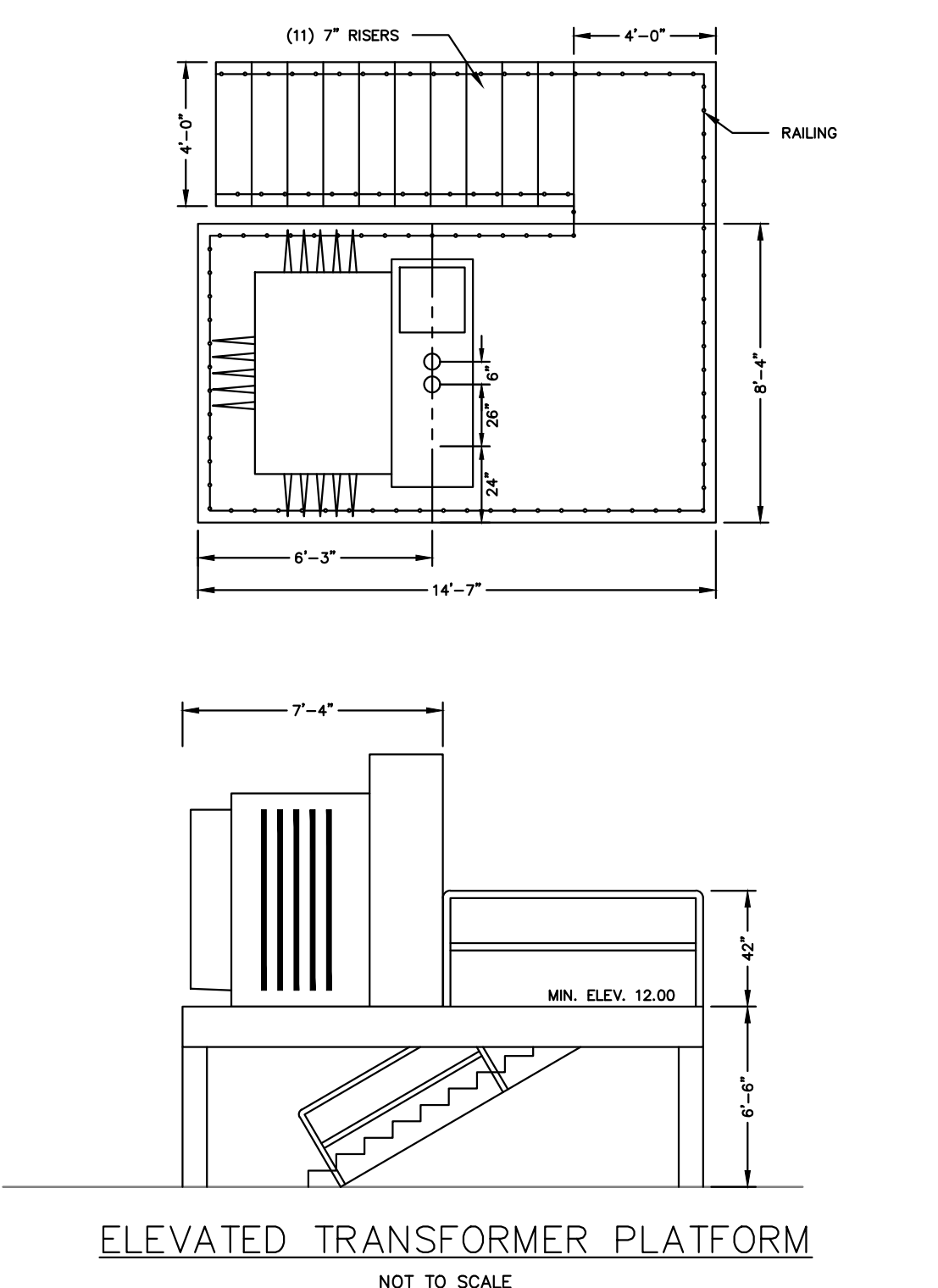
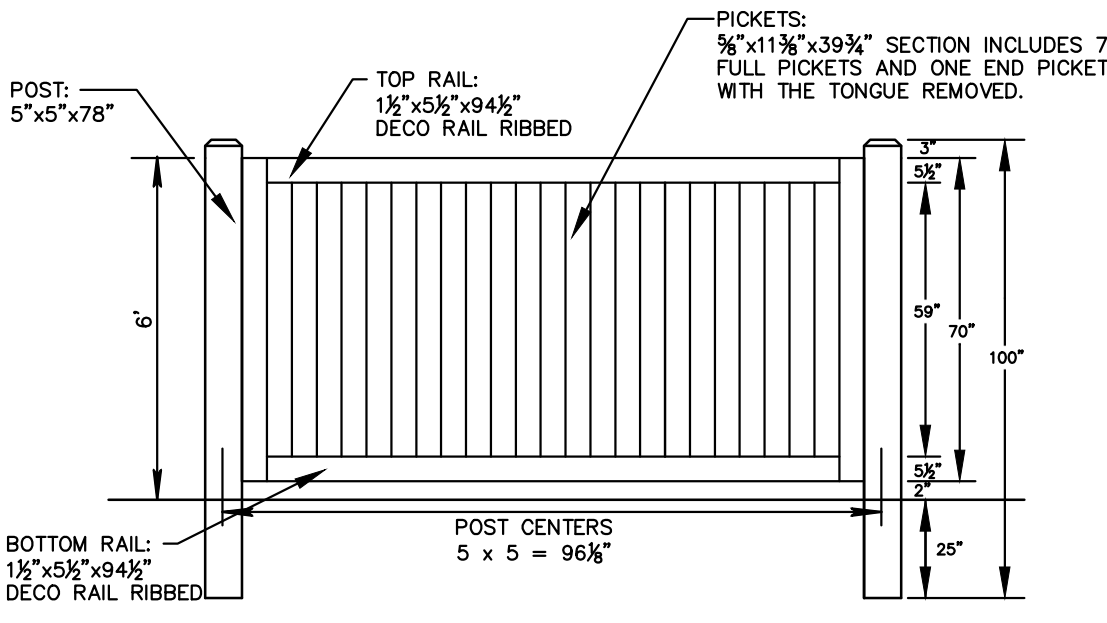
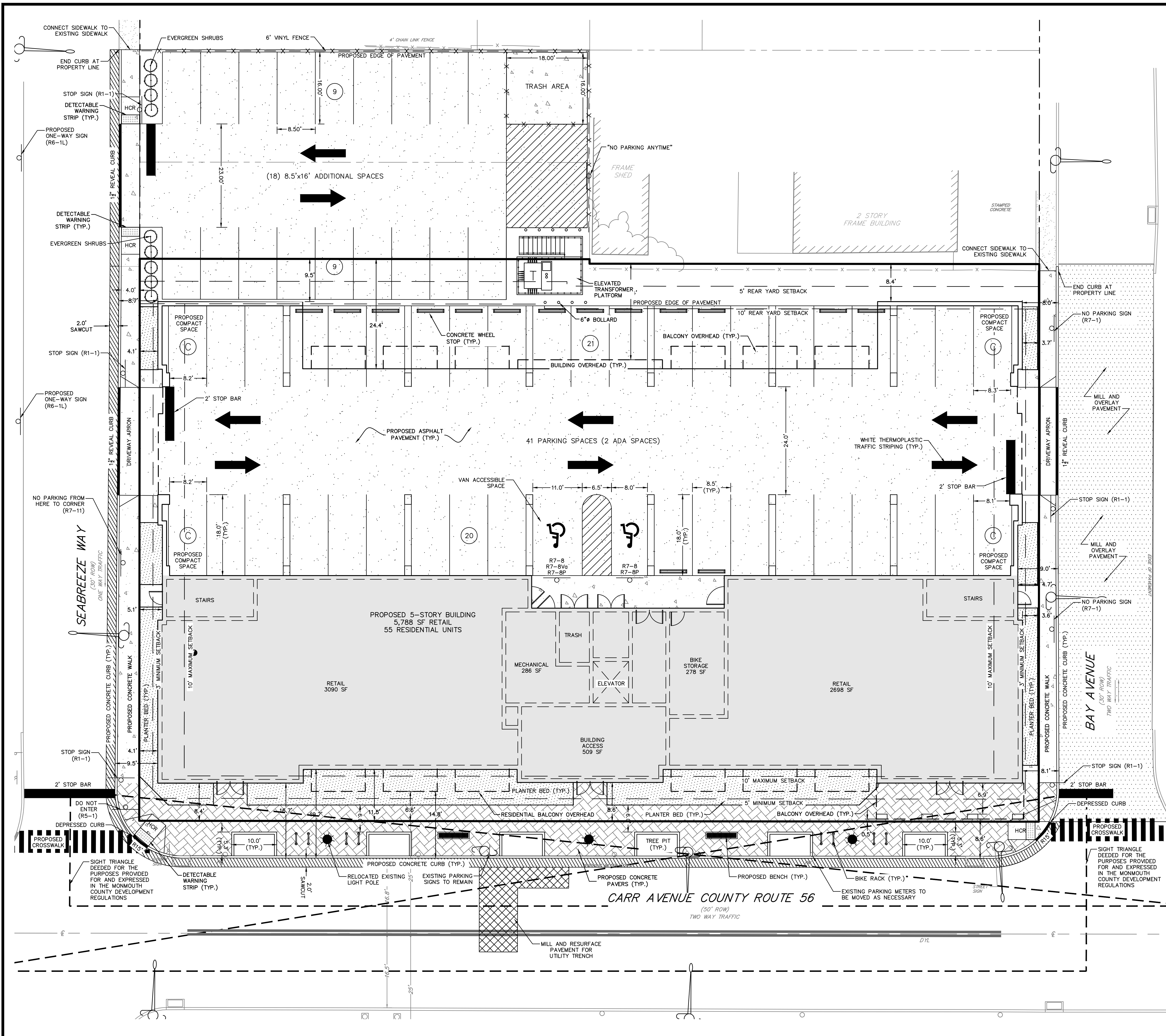


File Name: G:\Sackman Enterprises Inc\JOBS\SE-1912 - 19 & 29 Carr Ave - Keensburg\DWG\Exhibits\2022-09-16 Updated Layout.dwg  
 Plot time: Dec 15, 2022 - 4:07pm



RELEASED BY: LLZ	CHECKED BY: MJR	DATE: 12/15/22	PROJECT No.: SE-1912	DRAWING NAME: 2022-09-16 Updated Layout.dwg
DRAWN BY: MJR	DATE: 12/15/22	PROJECT No.: SE-1912	DRAWING NAME: 2022-09-16 Updated Layout.dwg	DRAWN BY: LLZ
<b>UPDATED LAYOUT 19 CARR AVENUE BLOCK 11 LOTS 4, 5, 6 &amp; 7</b>				SITUATED IN BOROUGH OF KEANSBURG, MONMOUTH COUNTY, NEW JERSEY
Gateway 196 Centre Hamilton, NJ 08891 609-910-4450				Certificate of Authorization No. 240A98184000 PE No. GE04282800 PE No. GE04733800
<b>MidAtlantic Engineering Partners, LLC</b>				Louis L. Zaepfel II P.E. William J. Parilli II P.E.
Sheet Number <b>1 OF 1</b>				DATE REVISIONS CHECKED BY DRAWN BY