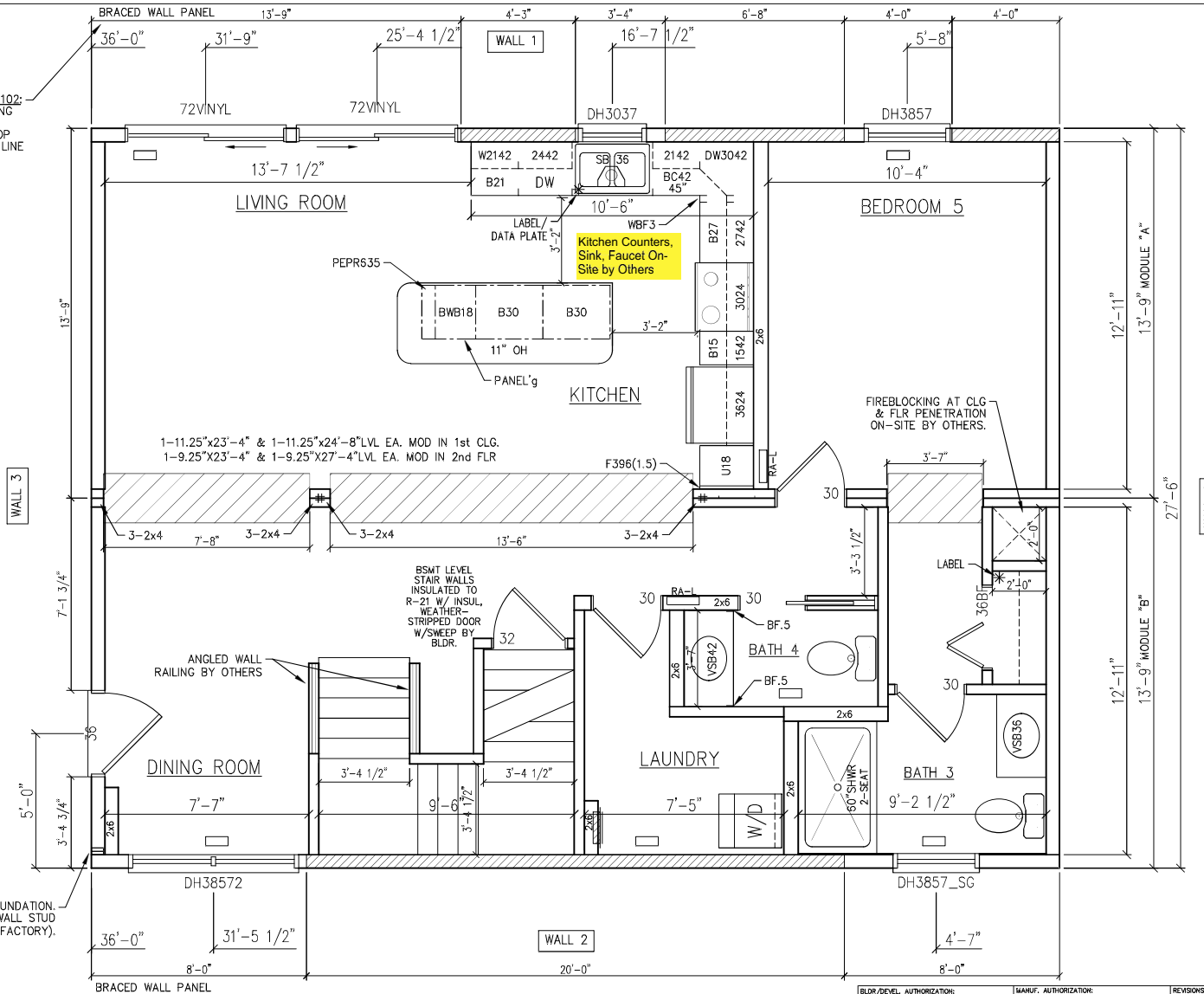


DESIGNED COLLECTOR PER APA TECH TOPIC TT-102:
 MAX SHEAR FORCE ON TOP PLATE SPLICES ALONG
 LENGTH OF WALL TOP PLATE = 3010#
 MANUFACTURER CONNECTION: CONNECT EACH TOP
 PLATE SPLICE ALONG LENGTH OF BRACED WALL LINE
 WITH (23) 0.131"x3" NAILS PER SPLICE JOINT.
 SITE CONNECTION: n/a



jeff skinner
 Verified by signNow
 05/17/2024 10:29:11 AM
 05/17/2024

NOTE: THE EXISTING HOUSE AT THIS ADDRESS IS PERMITTED FOR REMOVAL OR DEMOLITION.

NJ APPLICABLE BUILDING CODES:
 2021 IRC - NJ EDITION, 2021 NSPC, 2021 IECC,
 2020 NEC - "ALL W/NJ AMENDMENTS"
 USE GROUP: R5

- NJ NOTES:
1. EXTERIOR WALL FIRE RATING = 0
 2. ELECTRICAL PANEL BOX RATING = 200A
 3. HOT WATER PIPING <3/4" SHALL BE INSULATED TO R-3 MIN.
 4. THIS HOUSE IS WITHIN MUNCY HOMES INC. APPROVED SYSTEMS.

NOTE: FINISHED FLOOR > 6' ABOVE GRADE
 FLOOD ZONE: YES
 FOUNDATION TYPE: BASEMENT
 PIER HEIGHT: 8'-0"
 STORIES ABOVE GRADE: 2
 FIRE SPRINKLER REQ'D: NO
 CONSTRUCTION TYPE: VB

LOT LINE FIRE SEPARATION: - NOT REQUIRED.
 WALLS/PROJECTIONS > 5' FROM LOT LINE.

NOTE: WINDOWS SHALL COMPLY WITH '15, '18, '21 IRC SECT R312. SEE SYSTEM SHT 3a, WINDOW NOTE 4. WINDOW SILLS ('15, '18) OR BOTTOM OF WINDOWS ('21) LOCATED BELOW 24" AFF & EXCEED 72" ABOVE GRADE SHALL HAVE "WINDOW FALL PROTECTION DEVICE" COMPLYING WITH ASTM 2006 OR F 2050.

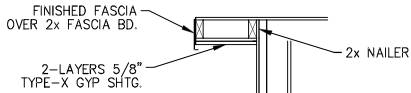
SIDEWALL = 2x6 16"oc
 MARR WALL = 2x4 16"oc
 FLOOR JST = 2x10 16"oc
 CLG. HGT. = 9'-0"
 ADDTL BSMT COL = #
 LABEL(S) = *

CLG = R-51, WALL = R-21
 FLR = R-35 (BY BLDG)
 (SEE RESCHECK)
 STAIR OPEN'G(S) BASED ON
 8.25"/9.00" GEOMETRY.

DESIGN SNOW ZONE = 35 GSL
 ROOF = 5/12 24"oc (60#)
 DESIGN WIND ZONE = 115 Vult
 DEST. = 33 CENTER Ave
 KEANSBURG, NJ 07734
 MONMOUTH CO.

PLAN MAY BE BUILT MIRRORED OR REVERSED.

BLDG/DEVEL. AUTHORIZATION:	MANUF. AUTHORIZATION:	REVISIONS:
SUPERIOR BUILDERS <small>A SALES DIVISION OF MUNCY HOMES, INC. 1567 Pa Rt442E, Muncy, Pa 17756 • (570)-546-2264 www.superiorbuilders.com</small>		<small>PLANS HAVE BEEN EXTRACTED FROM APPROVED BUILDING SYSTEM DOCUMENTATION. PROD. ENGR: Edward L. Milunc Jr. EDWARD L. MILUNC JR.</small>
SUPREME Mod Hms / SKINNER		SERIES: CUSTOM
1st STY FLOOR PLAN		PLAN NO.: 000
DWG. BY: HAYES	DATE: 05-13-2024	SCALE: 1/4" = 1'-0"
		JOB. SET # 24822_000

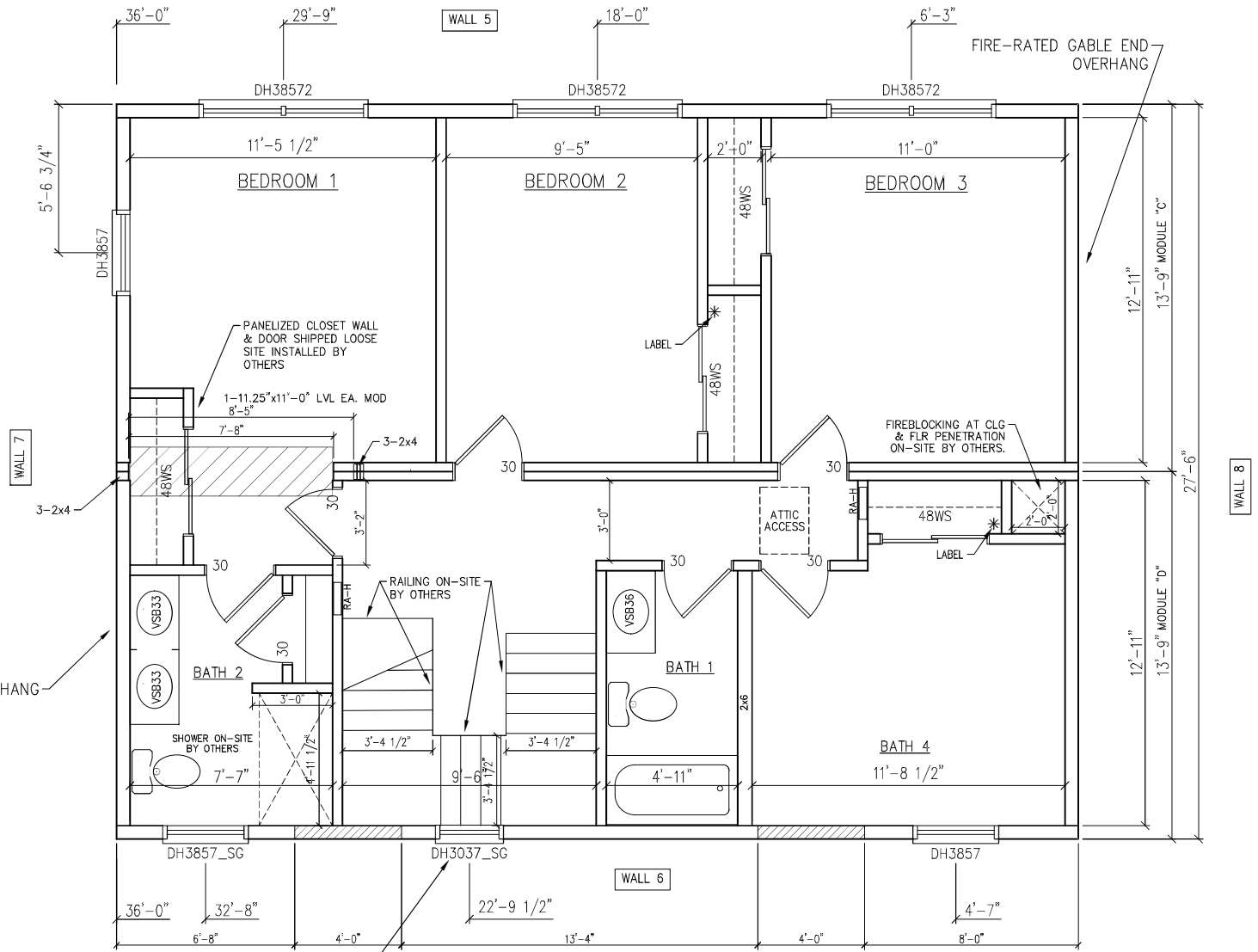


FIRE-RATED GABLE END OVER HANG DETAIL

BASE LAYER: 5/8" TYPE-X GYP SHTG APPLIED AT RIGHT ANGLES TO JOISTS @ 16"oc W/ (2)-#6 x 1 1/4" TYPE W or S DRYWALL SCREWS RATED FOR EXTERIOR USE AT EACH RAFTER & #6 x 1 1/4" TYPE W or S DRYWALL SCREWS RATED FOR EXTERIOR USE @ 8"oc AT 2x NAILER.

FACE LAYER: 5/8" TYPE-X GYP SHTG APPLIED AT RIGHT ANGLES TO JOISTS @ 16"oc W/ (2)-#6 x 1 7/8" TYPE W or S DRYWALL SCREWS RATED FOR EXTERIOR USE AT EACH RAFTER & #6 x 1 7/8" TYPE W or S DRYWALL SCREWS RATED FOR EXTERIOR USE @ 8"oc AT 2x NAILER. OFFSET JOINTS A MIN OF 24" FROM BASE LAYER JOINTS.

FIRE-RATED GABLE END OVERHANG



jeff skinner



05/17/2024

WINDOW HDR @ 39" AFF
BTTM OF WINDOW APPROX 50"
ABOVE UPPER PLATFORM

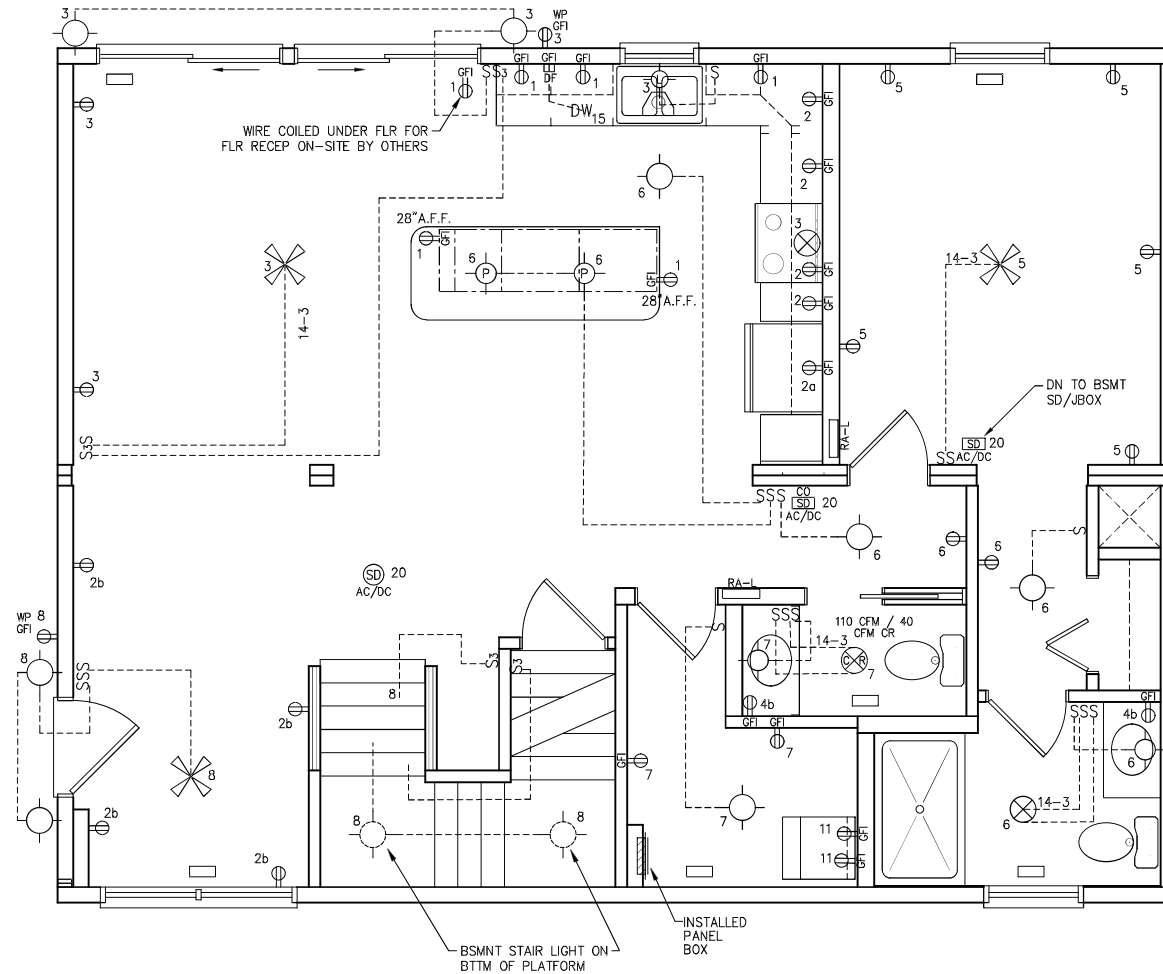
SIDEWALL = 2x6 16"oc
MARR WALL = 2x4 16"oc
FLOOR JST = 2x8 16"oc
CLG. HGT. = 8'-0"
LABEL(S) = *

BLDR/DEVEL. AUTHORIZATION:		MANUF. AUTHORIZATION:		REVISED:
SUPERIOR BUILDERS		PLANS HAVE BEEN EXTRACTED FROM APPROVED BUILDING SYSTEM DOCUMENTATION.		SERIES: CUSTOM
A SALES DIVISION OF WAREX HOMES, INC.		PROD. ENGR: Edward L. Milunc Jr.		PLAN NO. 000
1567 Pa Rt442E, Nancy, Pa 17756 @ (570)-546-2264		www.superiorbuilders.com		EDWARD L. MILUNC JR.
SUPREME Mod Hms / SKINNER				24822_000
2nd STY FLOOR PLAN				
DRW. BY: HAYES	DATE: 05-14-2024	SCALE: 1/4"=1'-0"	JOB. SER. # 24822_000	

WHOLE HOUSE MECHANICAL VENTILATION (M1507 2012/2015 IRC, M1505 2018/2021 IRC)	
# OF BEDROOMS:	5
FLOOR AREA SQ FT:	1980
AIR FLOW REQUIRED:	75
AIR FLOW PROVIDED:	80
(SEE NOTED CONT. RUN BATH FANS)	

EFFICIENCY PACKAGE: EFFICIENT SERVICE WATER HEATING PERFORMANCE,
TO BE INSPECTED/APPROVED BY LOCAL AHJ

HEAT SYSTEM: ON-SITE BY OTHERS, REGISTERS AND RETURNS ONLY BY FACTORY.
SITE INSTALLED HVAC SYSTEM SHALL BE DESIGNED PER ACCA MANUAL-J,
EQUIPMENT SIZED PER ACCA MANUAL-S, AND DUCTS PER ACCA MANUAL-D.
HEAT LOSS CALCULATIONS SHALL BE PROVIDED BY OTHERS.
HVAC SYSTEM IS NOT PART OF MODULAR SUBMITTAL HVAC INSTALLATION
SHALL BE REVIEWED, APPROVED, AND INSPECTED BY THE LOCAL AHJ.



jeff skinner



05/17/2024

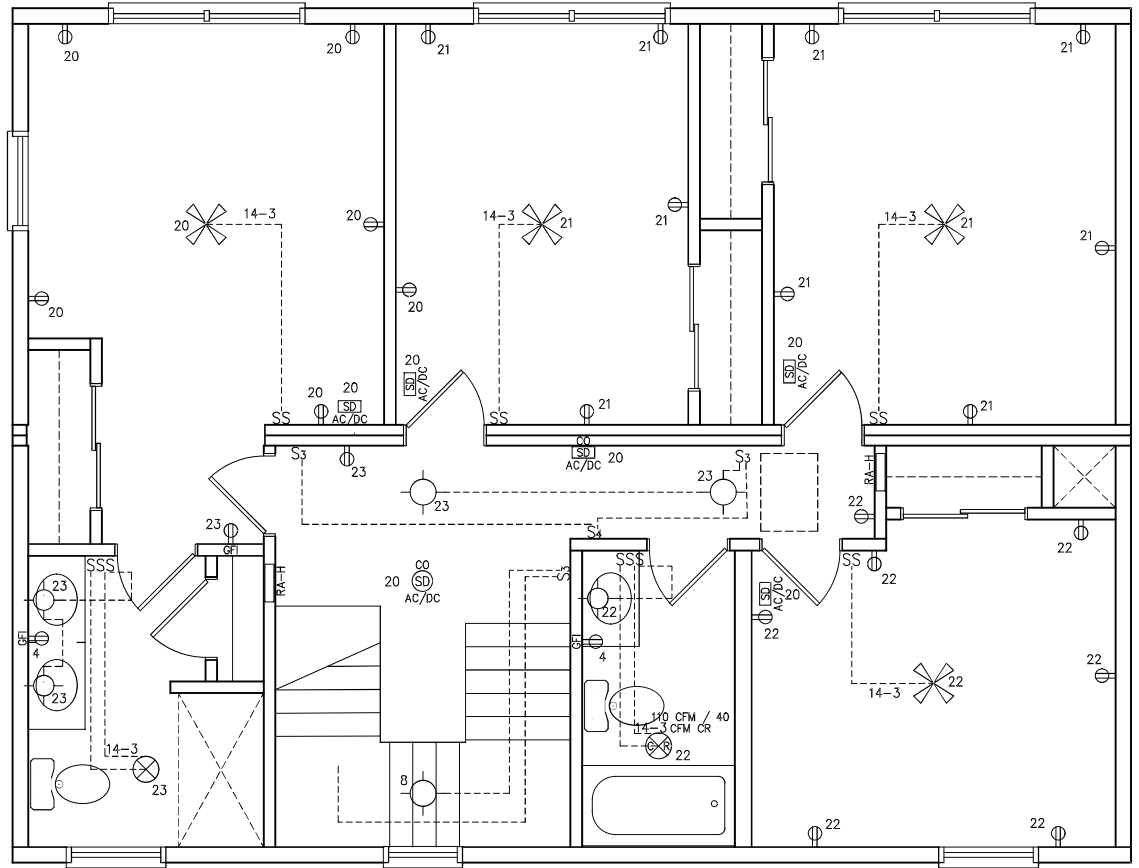
LIGHTING & LIGHTING CONTROL NOTES: (2021 IRC)

- ALL PERMANENTLY INSTALLED LIGHTING FIXTURES (EXCLUDING KITCHEN APPLIANCES) SHALL CONTAIN ONLY HIGH-EFFICACY LIGHTING SOURCES. HIGH-EFFICACY LIGHTING SOURCE: ANY LAMPS (LIGHT BULBS) WITH A EFFICACY OF NOT LESS THAN 65 LUMENS PER WATT, OR LUMINARIES (SELF-CONTAINED LIGHT FIXTURES) WITH A EFFICACY OF NOT LESS THAN 45 LUMENS PER WATT. (21 IRC N1104.1)
- INTERIOR LIGHTING CONTROLS: DIMMERS, OCCUPANT SENSORS OR OTHER CONTROLS INSTALLED OR BUILT INTO THE FIXTURE MUST BE INSTALLED EVERYWHERE EXCEPT BATHROOMS, HALLWAYS, EXTERIOR LIGHTS AND SECURITY LIGHTS. (21 IRC N1104.2)
- EXTERIOR LIGHTING CONTROLS: WHEN THE TOTAL PERMANENTLY INSTALLED EXTERIOR LIGHTING POWER EXCEED 30 WATTS (TOTAL OF ALL LIGHTS): LIGHTING CONTROL BY MANUAL ON/OFF SWITCH THAT PERMITS AUTO-SHUTOFF ACTION; LIGHTING SHALL AUTO-OFF IN DAYLIGHT; OVERRIDE CONTROLS SHALL NOT BE PRESET EXCEPT TO CHANGE THE SETTINGS FOR 24 HOURS MAXIMUM (THEN THE SETTINGS RETURN TO NORMAL). (21 IRC N1104.3)

NOTE:

- AFCI PROTECTION & TAMPERED-RESISTANT RECPTS. PROVIDED PER 2020 NEC.
- ALL CEILING LIGHT BOXES SHALL BE RATED FOR 50# PER 2020 NEC 314.27 (A)(2).
- ALL CEILING LIGHT BOXES IN HABITABLE SPACE SHALL BE RATED FOR 70# PER 2020 NEC 314.27 (C).
- ON-SITE DECK/PORCH/SWOOP SHALL EXTEND UNDER EXT GFCI RECEPT AS SHOWN SO THE RECEPT MAY BE ACCESSIBLE FROM THE DECK/PORCH/SWOOP.
- REQ'D FRONT & REAR EXT GFCI RECEPT SHALL BE ACCESSIBLE FROM GRADE. ADDITIONAL "GRADE-ACCESSIBLE" EXT GFCI RECEPTS SHALL BE PROVIDED AND INSTALLED BY OTHERS (BELOW THE MODULES) AT THE FRONT AND REAR OF THE HOUSE SHOULD THE RECEPITS SHOWN NOT BE ACCESSIBLE FROM GRADE.
- ATTIC LIGHT REQUIRED IF SPACE IS USED FOR STORAGE OR CONTAINS EQUIPMENT REQUIRING SERVICING, PER 2020 NEC, SEC 210.70(A)(3) TO BE PROVIDED AND INSTALLED ON-SITE BY OTHERS.
- SURGE PROTECTION PER 2020 NEC 230.67 & DISCONNECT PER 2020 NEC 230.85 ON-SITE BY OTHERS.

BLDR/DEVEL. AUTHORIZATION:	MANUF. AUTHORIZATION:	REVISIONS:
SUPERIOR BUILDERS		PLANS HAVE BEEN EXTRACTED FROM APPROVED BUILDING SYSTEM DOCUMENTATION.
A SALES DIVISION OF WARRICK HOMES, INC. 1567 Pa Rt 442E, Nancy, Pa 17756 © (570)-546-2264 www.superiorbuilders.com		PROD. ENGR: Edward L. Milunc Jr. EDWARD L. MILUNC JR.
SUPREME Mod Hms / SKINNER		SERIES: CUSTOM
1ST STY ELECT PLAN		PLAN NO. 000
DRN. BY: HAYES	DATE: 05-14-2023	SCALE: 1/4"=1'-0"
		JOB. SER.# 24822_000



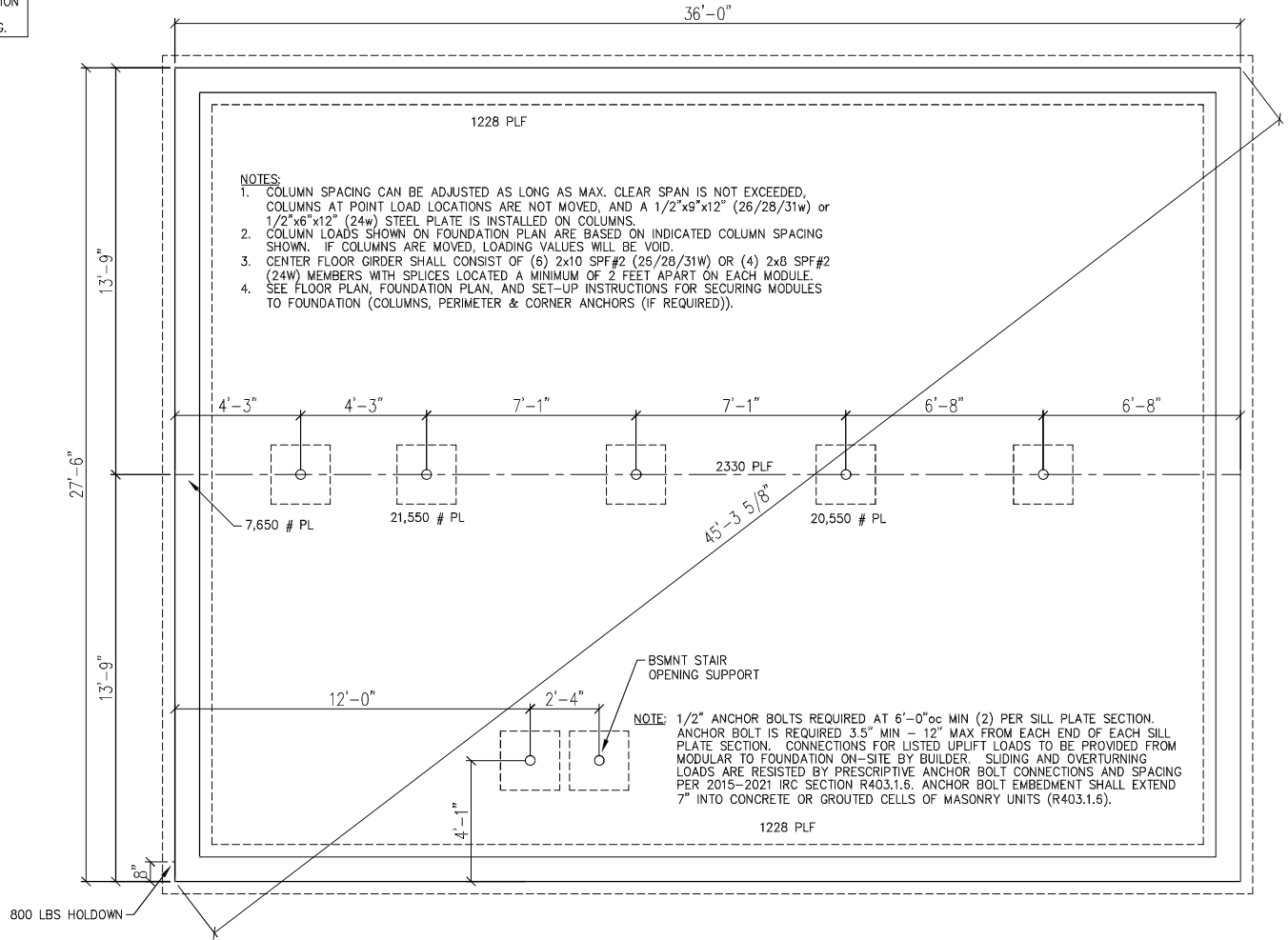
jeff skinner



05/17/2024

BLDG./DEVEL. AUTHORIZATION:	MANUF. AUTHORIZATION:	REVISIONS:
SUPERIOR BUILDERS <small>A SALES DIVISION OF HORNY HORSES, INC. 1567 Pa Rt442E, Nancy, Pa 17756 © (570)-546-2264 www.superiorbuilders.com</small>		<small>PLANS HAVE BEEN EXTRACTED FROM APPROVED BUILDING SYSTEM DOCUMENTATION. PROD. ENGR: <u>Edward L. Milunc Jr.</u> EDWARD L. MILUNC JR.</small>
SUPREME Mod Hms / SKINNER		SERIES: CUSTOM
2ND STY ELECT PLAN		PLAN NO. 000
DWN. BY: HAYES	DATE: 05-14-2024	SCALE: 1/4"=1'-0" JOB. SER.# 24822_000

NOTE: FOUNDATION SHALL BE DESIGNED BY A DESIGN PROFESSIONAL WITH KNOWLEDGE OF LOCAL CONDITIONS. THIS SAMPLE PLAN IS MEANT ONLY TO COMMUNICATE THE DIMENSIONAL AND LOADING INFORMATION TO THE DESIGN PROFESSIONAL SO THEIR FOUNDATION DESIGN IS COORDINATED WITH THE REQUIREMENTS OF THE MODULAR BUILDING.



- NOTES:
1. COLUMN SPACING CAN BE ADJUSTED AS LONG AS MAX. CLEAR SPAN IS NOT EXCEEDED, COLUMNS AT POINT LOAD LOCATIONS ARE NOT MOVED, AND A 1/2"x9"x12" (26/28/31w) or 1/2"x6"x12" (24w) STEEL PLATE IS INSTALLED ON COLUMNS.
 2. COLUMN LOADS SHOWN ON FOUNDATION PLAN ARE BASED ON INDICATED COLUMN SPACING SHOWN. IF COLUMNS ARE MOVED, LOADING VALUES WILL BE VOID.
 3. CENTER FLOOR GIRDER SHALL CONSIST OF (6) 2x10 SPF#2 (28/28/31W) OR (4) 2x8 SPF#2 (24W) MEMBERS WITH SPLICES LOCATED A MINIMUM OF 2 FEET APART ON EACH MODULE.
 4. SEE FLOOR PLAN, FOUNDATION PLAN, AND SET-UP INSTRUCTIONS FOR SECURING MODULES TO FOUNDATION (COLUMNS, PERIMETER & CORNER ANCHORS (IF REQUIRED)).

NOTE: 1/2" ANCHOR BOLTS REQUIRED AT 6'-0"oc MIN (2) PER SILL PLATE SECTION. ANCHOR BOLT IS REQUIRED 3.5" MIN - 12" MAX FROM EACH END OF EACH SILL PLATE SECTION. CONNECTIONS FOR LISTED UPLIFT LOADS TO BE PROVIDED FROM MODULAR TO FOUNDATION ON-SITE BY BUILDER. SLIDING AND OVERTURNING LOADS ARE RESISTED BY PRESCRIPTIVE ANCHOR BOLT CONNECTIONS AND SPACING PER 2015-2021 IRC SECTION R403.1.6. ANCHOR BOLT EMBEDMENT SHALL EXTEND 7" INTO CONCRETE OR GROUTED CELLS OF MASONRY UNITS (R403.1.5).

- NOTES:
1. THIS FOUNDATION DRAWING AND NOTES ARE FOR REVIEW ONLY.
 2. THIS DRAWING TO BE USED FOR DIMENSIONS ONLY.
 3. SEE FLOOR PLAN FOR DIMENSIONS OF UNITS AND STAIR LOCATION.
 4. SEE MASTER SERIES DWGS., SHT. NO. 3c & 4A, FOR NOTES AND DETAILS.
 5. MAX. CENTER FLOOR GIRDER SUPPORT COLUMN SPACING = 6'-8".
= 8'-0" NO ROOF LOAD.

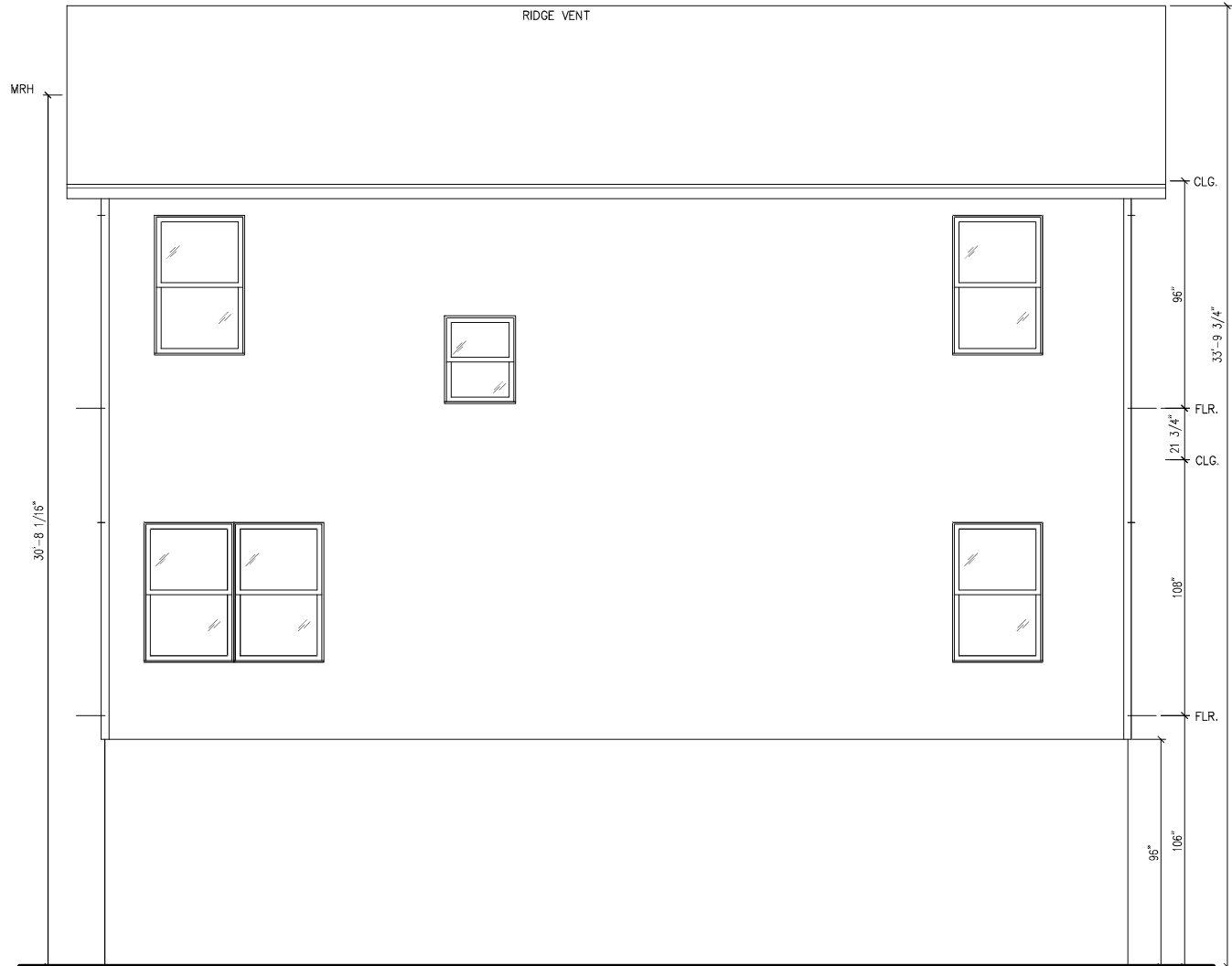
jeff skinner



05/17/2024

- FLOOD ZONE NOTES:
1. UNIT IS IN A FLOOD ZONE - THE AREA BELOW THE MODULES SHALL COMPLY WITH SECTION R322 OF THE IRC AND ALL OTHER STATE OR LOCAL CODES AS APPLICABLE. AREA BELOW MODULES TO BE UTILIZED SOLELY FOR VEHICLE PARKING, BUILDING ACCESS, OR LIMITED STORAGE.
 2. THE MODULAR PORTION OF THIS STRUCTURE SHALL BE PLACED ABOVE THE DESIGN FLOOD ELEVATION AS REQUIRED BY SECTION R322 OF THE IRC. MODULAR UNIT TO BEAR ON TOP OF PRESSURE TREATED LUMBER.
 3. ALL FLOOD GATES/VENTS TO BE DESIGNED BY A DESIGN PROFESSIONAL AND APPROVED BY THE LOCAL AUTHORITY HAVING JURISDICTION.
 4. JOIST HANGERS AND CONNECTORS SHALL BE PROTECTED ON SITE BY OTHERS FROM THE ELEMENTS (WIND, RAIN, SALT, ETC.).

BLDR./DEVEL. AUTHORIZATION:	MANUF. AUTHORIZATION:	REVISIONS:
SUPERIOR BUILDERS		PLANS HAVE BEEN EXTRACTED FROM APPROVED BUILDING SYSTEM DOCUMENTATION.
A SALES DIVISION OF WAINWRIGHT HOMES, INC. 1567 Pa Rt442E, Nancy, Pa 17756 © (570)-546-2264 www.superiorbuilders.com		PROD. ENGR: Edward L. Milunc Jr. EDWARD L. MILUNC JR.
SUPREME Mod Hms / SKINNER		SERIES: CUSTOM
FOUNDATION PLAN		PLAN NO. 000
DWN. BY: HAYES	DATE: 05-14-2024	SCALE: 1/4"=1'-0"
		JOB. SER.# 24822_000



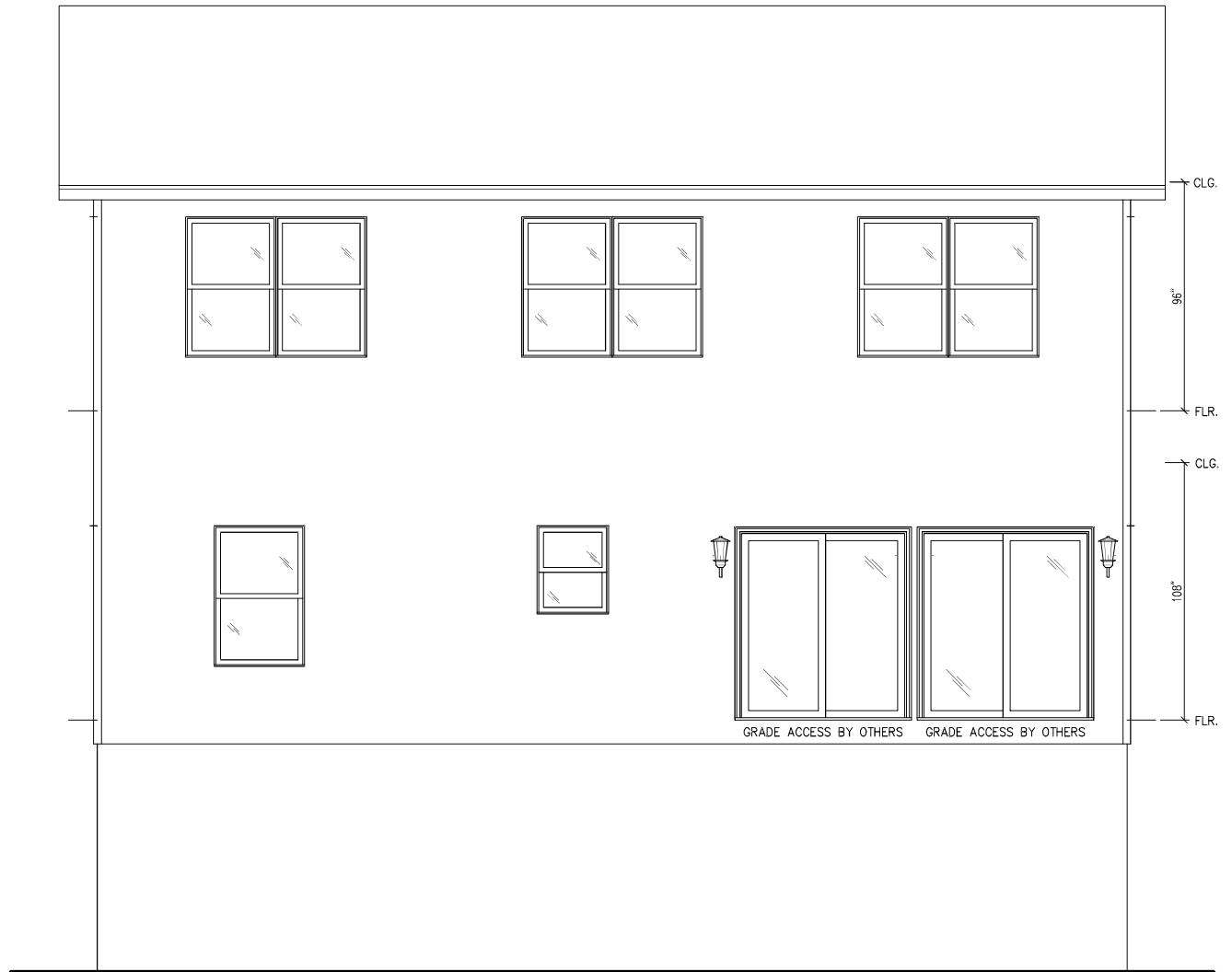
GRADE ELEVATION IS 6" ABOVE SEA LEVEL
 BFE = 11' ABOVE SEA LEVEL (5' ABOVE GRADE)

FRONT ELEVATION

NOTE: ELEVATIONS SHOWN MAY CONTAIN OPTIONAL OR SUGGESTED FEATURES

BLDR./DEVEL. AUTHORIZATION:	MANUF. AUTHORIZATION:	REVISIONS:
SUPERIOR BUILDERS		PLANS HAVE BEEN EXTRACTED FROM APPROVED BUILDING SYSTEM DOCUMENTATION.
A SALES DIVISION OF WAINY HORSES, INC. 1567 Pa Rt442E, Nancy, Pa 17756 © (570)-546-2264 www.superiorbuilders.com		PROD. ENGR: Edward L. Milunc Jr. EDWARD L. MILUNC JR.
SUPREME Mod Hms / SKINNER		SERIES: CUSTOM
FRONT ELEVATION		PLAN NO. 000
DRN. BY: HAYES	DATE: 05-14-2024	SCALE: 1/4" = 1'-0"
		JOB. SER. # 24822_000

jeff skinner
 Verified by signNow
 05/17/2024 14:16:29 UTC
 9b7e2d6c8e8e5c1ab67
 05/17/2024



jeff skinner

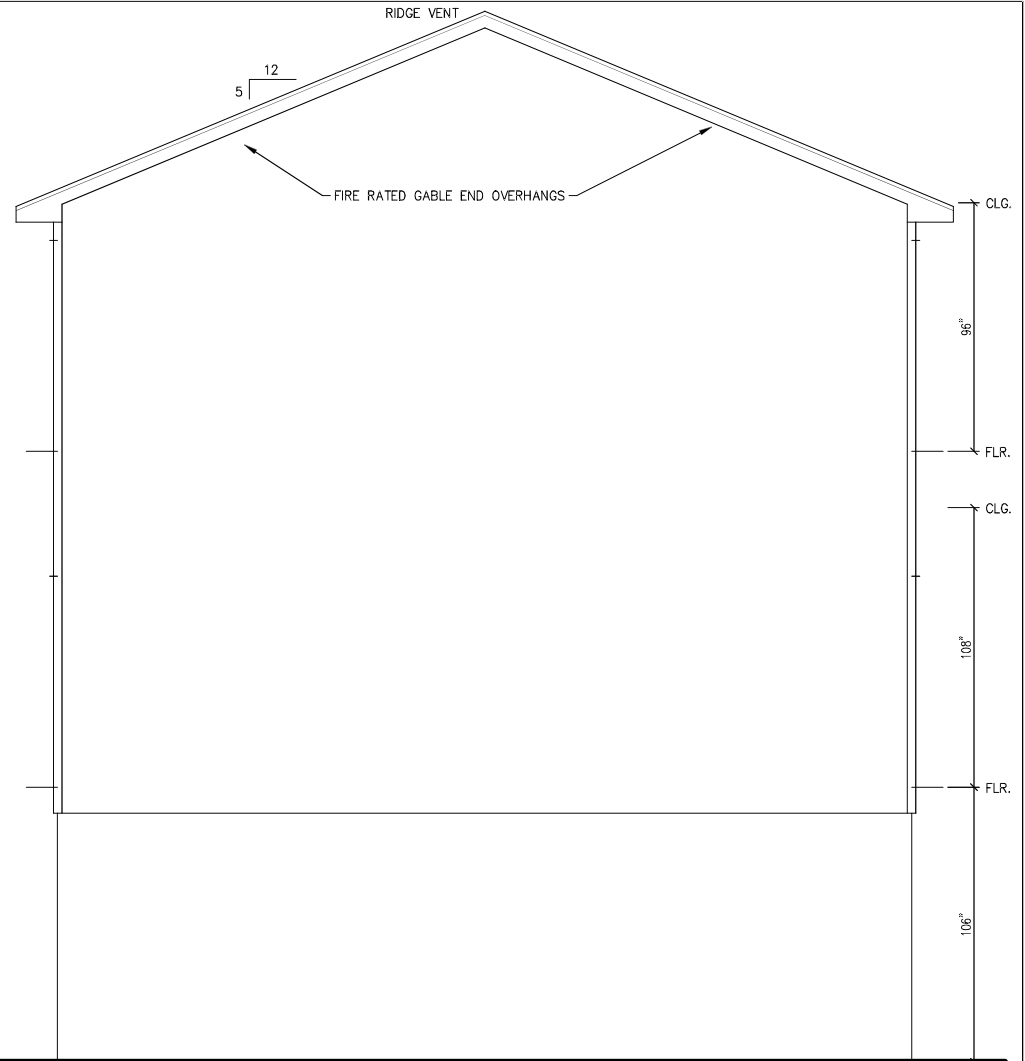
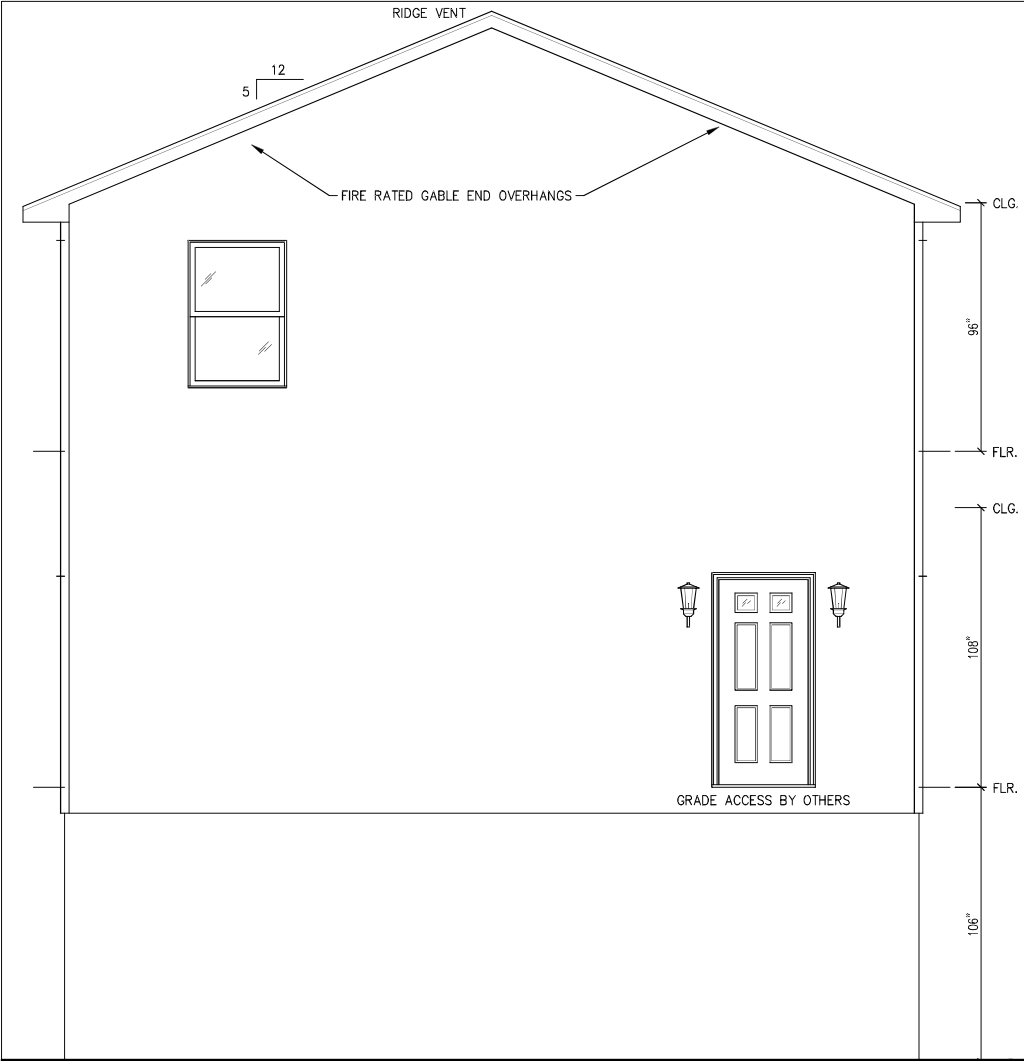
Verified by signNow
05/17/2024 14:13:29 UTC
05090645101487676136

05/17/2024

REAR ELEVATION

NOTE: ELEVATIONS SHOWN MAY CONTAIN OPTIONAL OR SUGGESTED FEATURES

BLDR./DEVEL. AUTHORIZATION:		MANUF. AUTHORIZATION:		REVISIONS:
SUPERIOR BUILDERS		PLANS HAVE BEEN EXTRACTED FROM APPROVED BUILDING SYSTEM DOCUMENTATION.		SERIES: CUSTOM
A SALES DIVISION OF WAREX HOMES, INC. 1567 Pa Rt442E, Nancy, Pa 17756 © (570)-546-2264 www.superiorbuilders.com		PROD. ENGR.: Edward L. Milunc Jr. EDWARD L. MILUNC JR.		PLAN NO. 000
SUPREME Mod Hms / SKINNER				SERIES: CUSTOM
REAR ELEVATION				PLAN NO. 000
DNW. BY: HAYES	DATE: 05-14-2024	SCALE: 1/4" = 1'-0"	JOB. SER. # 24822_000	



LEFT ELEVATION

NOTE: ELEVATIONS SHOWN MAY CONTAIN OPTIONAL OR SUGGESTED FEATURES

RIGHT ELEVATION

NOTE: ELEVATIONS SHOWN MAY CONTAIN OPTIONAL OR SUGGESTED FEATURES

jeff skinner

05/17/2024



DESIGN/DETAIL AUTHORIZATION:	MANUF. AUTHORIZATION:	REVISIONS:
SUPERIOR BUILDERS <small>A SALES DIVISION OF WARRICK HOMES, INC. 1567 Pa Rt442E, Nancy, Pa 17756 © (570)-546-2264 www.superiorbuilders.com</small>		<small>PLANS HAVE BEEN EXTRACTED FROM APPROVED BUILDING SYSTEM DOCUMENTATION.</small> <small>PROD. ENGR. Edward L. Milunc Jr. EDWARD L. MILUNC JR.</small>
SUPREME Mod Hms / SKINNER		SERIES: CUSTOM
SIDE ELEVATIONS		PLAN NO. 000
DRN. BY: HAYES	DATE: 05-14-2024	SCALE: 1/4" = 1'-0"
		JOB SER.# 24822_000