

UNIT MATRIX	
STUDIO	4 UNITS
ONE BEDROOM	16 UNITS
TWO BEDROOM	28 UNITS
TOTAL	48 UNITS

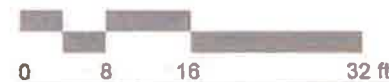
GROUND FLOOR PLAN
SCALE 1/8" = 1'-0"

CARR AVENUE

* DRAWINGS NOT TO SCALE

The above illustrations are representative of the architectural style. They are not meant to illustrate the final design or materials but are intended to depict the size, mass, and general materials of the proposed building.

©2024 BartonPartners Architects Planners, Inc. All rights reserved.



A1

1 Carr Avenue
Keansburg, NJ

Project Number: 21058
Client: Sackman Enterprise
Date: 2024.10.15



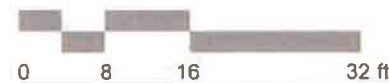
BARTON PARTNERS
urban design + architecture

700 East Main Street, Suite 301, Norristown, Pa 19401
www.bartonpartners.com | t:610.930.2800 | e:design@bartonpartners.com



THIRD FLOOR PLAN
SCALE 1/8" = 1'-0"

UNIT MATRIX	
STUDIO	4 UNITS
ONE BEDROOM	16 UNITS
TWO BEDROOM	28 UNITS
TOTAL	48 UNITS



* DRAWINGS NOT TO SCALE

The above illustrations are representative of the architectural style. They are not meant to illustrate the final design or materials but are intended to depict the size, mass, and general materials of the proposed building.

©2024 BartonPartners Architects Planners, Inc. All rights reserved.

A3

**1 Carr Avenue
Keansburg, NJ**

Project Number: 21058
Client: Sackman Enterprise
Date: 2024.10.15



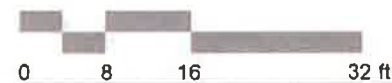
BARTONPARTNERS
urban design + architecture

700 East Main Street, Suite 301, Norristown, Pa 19401
www.bartonpartners.com | t:610.930.2800 | e:design@bartonpartners.com



FOURTH FLOOR PLAN
SCALE 1/8" = 1'-0"

UNIT MATRIX	
STUDIO	4 UNITS
ONE BEDROOM	16 UNITS
TWO BEDROOM	28 UNITS
TOTAL	48 UNITS



* DRAWINGS NOT TO SCALE

The above illustrations are representative of the architectural style. They are not meant to illustrate the final design or materials but are intended to depict the size, mass, and general materials of the proposed building.

©2024 BartonPartners Architects Planners, Inc. All rights reserved.

A4

**1 Carr Avenue
Keansburg, NJ**

Project Number: 21058
Client: Sackman Enterprise
Date: 2024.10.15



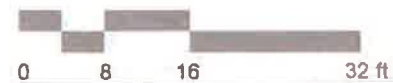
BARTONPARTNERS
urban design + architecture

700 East Main Street, Suite 301, Norristown, Pa 19401
www.bartonpartners.com | t:610.930.2800 | e:design@bartonpartners.com



FIFTH FLOOR PLAN
SCALE 1/8" = 1'-0"

UNIT MATRIX	
STUDIO	4 UNITS
ONE BEDROOM	16 UNITS
TWO BEDROOM	28 UNITS
TOTAL	48 UNITS



* DRAWINGS NOT TO SCALE

The above illustrations are representative of the architectural style. They are not meant to illustrate the final design or materials but are intended to depict the size, mass, and general materials of the proposed building.

©2024 BartonPartners Architects Planners, Inc. All rights reserved.

A5

**1 Carr Avenue
Keansburg, NJ**

Project Number: 21058
Client: Sackman Enterprise
Date: 2024.10.15

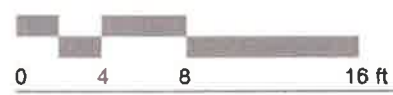


BARTONPARTNERS
urban design + architecture

700 East Main Street, Suite 301, Norristown, Pa 19401
www.bartonpartners.com | t:610.930.2800 | e:design@bartonpartners.com



FRONT ELEVATION
SCALE 1/8" = 1'-0"



* DRAWINGS NOT TO SCALE

The above illustrations are representative of the architectural style. They are not meant to illustrate the final design or materials but are intended to depict the size, mass, and general materials of the proposed building.

©2024 BartonPartners Architects Planners, Inc. All rights reserved.

A6

**1 Carr Avenue
Keansburg, NJ**

Project Number: 21058
Client: Sackman Enterprise
Date: 2024.10.15



BARTONPARTNERS
urban design + architecture

700 East Main Street, Suite 301, Norristown, Pa 19401
www.bartonpartners.com | t:610.930.2800 | e:design@bartonpartners.com

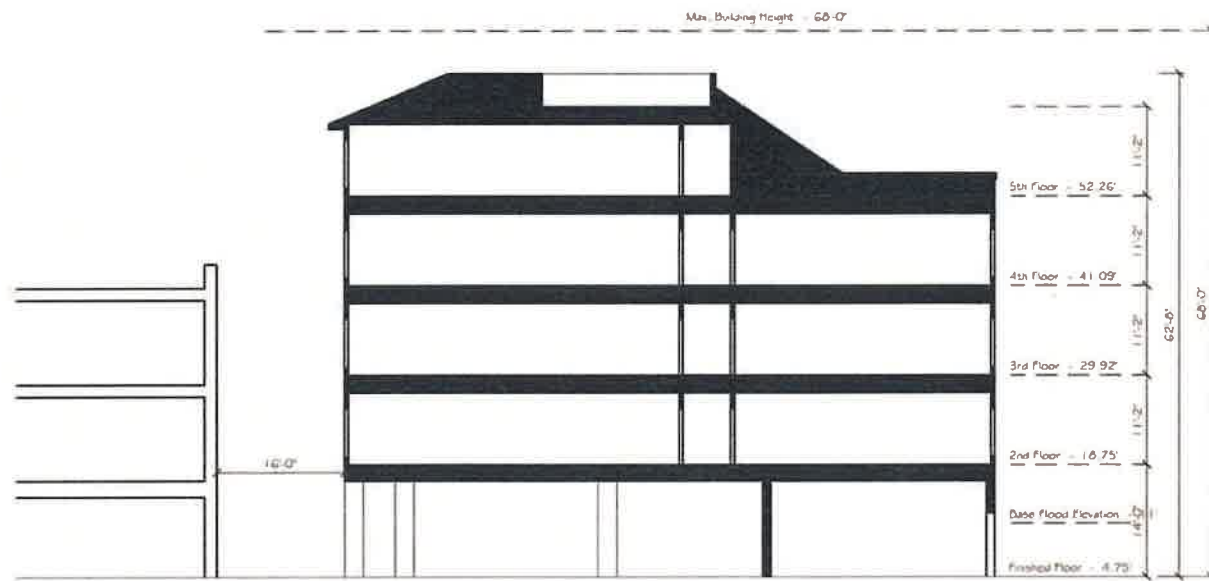


SIDE ELEVATION- BEACHWAY AVE.
SCALE 3/32" = 1'-0"



REAR ELEVATION
SCALE 3/32" = 1'-0"

- BUILDING MATERIALS FOR SIDE AND REAR ELEVATIONS ARE THE SAME AS THOSE NOTED ON THE CARR AVENUE ELEVATION



SECTION
SCALE 3/32" = 1'-0"

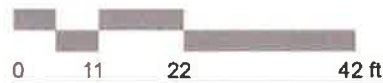


SIDE ELEVATION- BAY AVE.
SCALE 3/32" = 1'-0"

* DRAWINGS NOT TO SCALE

The above illustrations are representative of the architectural style. They are not meant to illustrate the final design or materials but are intended to depict the size, mass, and general materials of the proposed building.

©2024 BartonPartners Architects Planners, Inc. All rights reserved.



A7

**1 Carr Avenue
Keansburg, NJ**

Project Number: 21058
Client: Sackman Enterprise
Date: 2024.10.15



BARTONPARTNERS
urban design + architecture

700 East Main Street, Suite 301, Norristown, Pa 19401
www.bartonpartners.com | t:610.930.2800 | e:design@bartonpartners.com



The above illustrations are representative of the architectural style. They are not meant to illustrate the final design or materials but are intended to depict the size, mass, and general materials of the proposed building.

©2024 BartonPartners Architects Planners, Inc. All rights reserved.

A8

**1 Carr Avenue
Keansburg, NJ**

Project Number: 21058
Client: Sackman Enterprise
Date: 2024.10.15



BARTON PARTNERS
urban design + architecture

700 East Main Street, Suite 301, Norristown, Pa 19401
www.bartonpartners.com | 610.930.2800 | e:design@bartonpartners.com



The above illustrations are representative of the architectural style. They are not meant to illustrate the final design or materials but are intended to depict the size, mass, and general materials of the proposed building.

©2024 BartonPartners Architects Planners, Inc. All rights reserved.

A9

**1 Carr Avenue
Keansburg, NJ**

Project Number: 21058
Client: Sackman Enterprise
Date: 2024.10.15



BARTONPARTNERS
urban design + architecture

700 East Main Street, Suite 301, Norristown, Pa 19401
www.bartonpartners.com | t:610.930.2800 | e:design@bartonpartners.com



The above illustrations are representative of the architectural style. They are not meant to illustrate the final design or materials but are intended to depict the size, mass, and general materials of the proposed building.

©2024 BartonPartners Architects Planners, Inc. All rights reserved.

A10

**1 Carr Avenue
Keansburg, NJ**

Project Number: 21053
Client: Sackman Enterprise
Date: 2024.10.15



BARTONPARTNERS
urban design + architecture

700 East Main Street, Suite 301, Norristown, Pa 19401
www.bartonpartners.com | t:610.930.2800 | a:design@bartonpartners.com